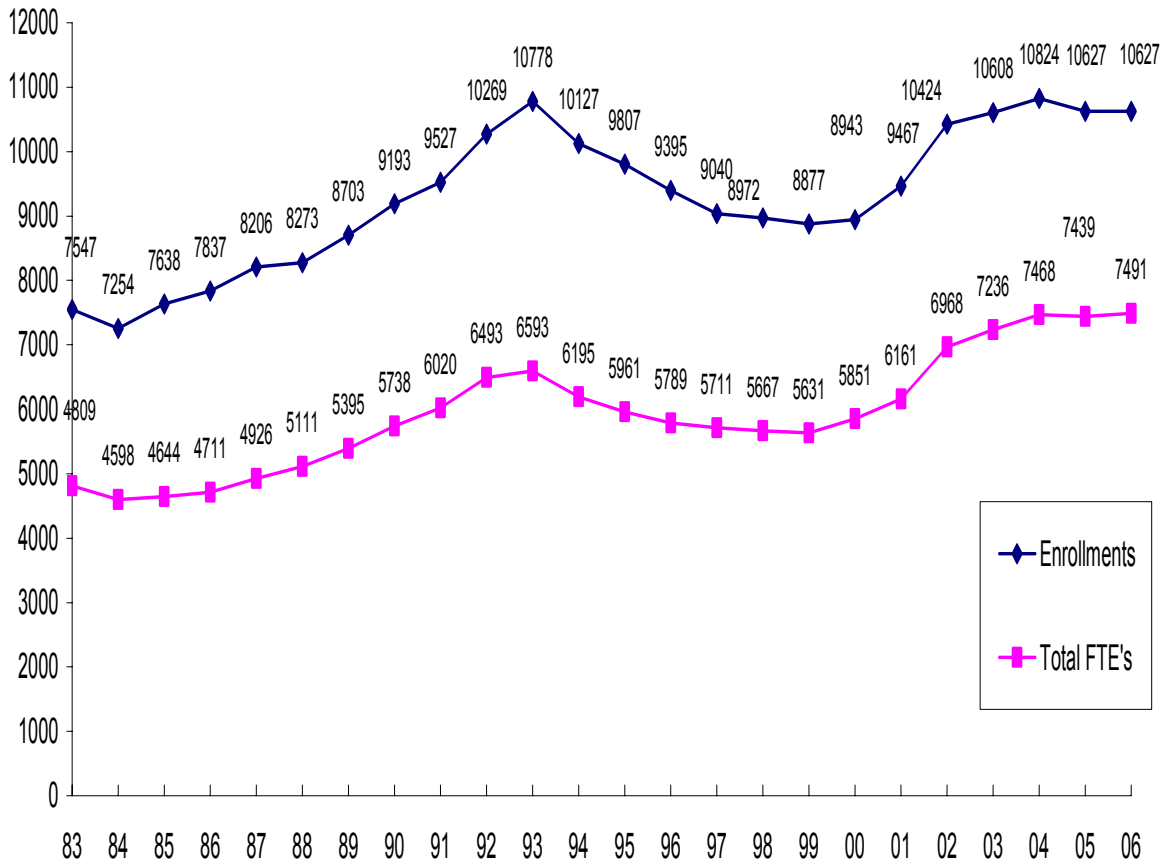


CREDIT ENROLLMENT FALL 2006

Third Week Enrollments



Delaware County Community College

Institutional Effectiveness Office

September 2006

FALL 2006 ENROLLMENT TRENDS

Fall FTE's increased 0.7%, while enrollments remained the same.

	Percent Change	Change in Number
Student Enrollment	0.0%	0
Total Full-Time Equivalent (FTE's)	0.7%	+52

The largest gains in number of students occurred among Career/Education majors and second year students.

	Percent Change	Change in Number of Students
Career Education/General Studies majors	15.9%	456
Second-year Students	4.8%	143

The largest losses in student enrollment occurred among transfer majors, first-year students, and new, June high school graduates.

	Percent Change	Change in Number of Students
Transfer majors	-5.6%	-377
First-year students	-1.9%	-143
New June high school graduates	-7.6%	-103

Enrollments in the Divisions

The enrollment changes in transfer and career programs were due to a large decrease in Science for Health Professions and a large increase in Health Studies-Pre-Nursing. The largest changes in credits by discipline occurred in Physical Science (-1,078), Earth and Space Science, a new discipline (+584), and English as a Second Language (+450).

Enrollment Changes	Percent Change	Change in Number of Students
Science for Health Professions	-24.0%	-313
Health Studies—Pre-Nursing	273.2%	448

Enrollments by Residence

Enrollments by geographic area are shown on pages 13-15. In Delaware County, sponsoring districts were down 0.9%. Enrollments in nonsponsoring areas of Delaware County were up 0.3%. Chester County residents increased 1.3%.

Enrollment at Off-Campus Sites

Enrollments by location are shown on pages 16-18. Southeast Center and Exton had the largest gains. Malin Road enrollments decreased 3.7% (-30). Distance education registration dropped, due to the phasing out of telecourses.

The graphs on pages 19 - 25 show several trends:

- Enrollment growth since 2000 was steepest among continuing students.
- Full-time enrollment since 2000 has shown steady gains.
- Due to changing configurations in majors for Pre-Nursing students, transfer enrollment has dropped and career enrollment gained since 2004.
- Nonsponsoring enrollments have risen incrementally since 2000.

Fall Third Week Credit Enrollment Statistics

	<u>FALL</u>	<u>FALL</u>	<u>FALL</u>	<u>CHANGE 2005-</u>	
	<u>2004</u>	<u>2005</u>	<u>2006</u>	<u>2006</u>	
				%	#
Total Students	10,824	10,627	10,627	0.0%	0
Full-time Equivalent (FTE's)	7,467.8	7,438.8	7,491.1	0.7%	52
Enrollment					
Transfer	7,080	6,690	6,313	-5.6%	-377
Career Education/General Studies	2,679	2,862	3,318	15.9%	456
Technical Education & Public Safety	1,065	1,075	996	-7.3%	-79
FTE's					
Transfer	5,037.8	4,876.3	4,653.8	-4.6%	-223
Career Education/General Studies	1,785.9	1,894.3	2,207.5	16.5%	313
Technical Education & Public Safety	644.1	668.2	629.8	-5.8%	-38
Female	6,154	6,028	6,020	-0.1%	-8
Male	4,670	4,599	4,493	-2.3%	-106
Missing	0	0	114		114
Continuing	6,411	6,259	6,203	-0.9%	-56
Readmit	1,315	1,283	1,357	5.8%	74
New	3,098	3,085	3,067	-0.6%	-18
New, June High School Grads	1,278	1,357	1,254	-7.6%	-103
New Adults	1,820	1,728	1,813	4.9%	85
New, full time	1,600	1,704	1,620	-4.9%	-84
New, part time	1,498	1,381	1,447	4.8%	66
New, International	43	55	82	49.1%	27
Black/African American	1,791	1,826	1,913	4.8%	87
New Black/African American	558	510	548	7.5%	38
Asian	431	409	428	4.6%	19
New Asian	136	118	131	11.0%	13
Hispanic	175	179	205	14.5%	26
New Hispanic	56	65	76	16.9%	11
Full Time	4,410	4,430	4,521	2.1%	91
Part Time	6,414	6,197	6,106	-1.5%	-91
On Campus	8,269	8,100	8,002	-1.2%	-98
Exclusively off campus	2,555	2,527	2,625	3.9%	98
First year (fewer than 30 credits)	7,784	7,659	7,516	-1.9%	-143
Second year (30 or more credits)	3,040	2,968	3,111	4.8%	143
Sponsoring	6,344	6,251	6,194	-0.9%	-57
Nonsponsoring	4,238	4,112	4,133	0.5%	21
International	152	169	209	23.7%	40
Out of state	90	95	91	-4.2%	-4
Last June's high school graduates	1,394	1,482	1,385	-6.5%	-97
Previous year's graduates	1,516	1,463	1,512	3.3%	49
Enrichment students (still in high school)	61	58	119	105.2%	61

COMPOSITION OF STUDENT BODY

	<u>FALL 2004</u>	<u>FALL 2005</u>	<u>FALL 2006</u>
Male	43%	43%	43%
Female	57%	57%	57%
Continuing	59%	59%	58%
Readmit	12%	12%	13%
New, graduated this year	12%	13%	12%
New Adults	17%	16%	17%
Full Time	41%	42%	43%
Part Time	59%	58%	57%
On Campus	76%	76%	75%
Off Campus	24%	24%	25%
First Year	72%	72%	71%
Second Year	28%	28%	29%
Sponsoring	60%	59%	58%
Nonsponsoring Delco	12%	11%	11%
Nonsponsoring Chester Co	22%	22%	23%
Nonsponsoring Other	6%	8%	8%
Transfer	65%	63%	59%
Career Ed/Technical Education/ General Ed	35%	37%	41%
Average Age: Median	22.0	22.0	22.0
Race/Ethnic Group: Percentages			
Black/African-American	17%	17.3%	18.1%
Native American	0.2%	0.2%	0.2%
Asian	4.0%	3.9%	4.1%
Hispanic	1.6%	1.7%	1.9%
White	72%	71.1%	69.1%
Other	5.8%	5.9%	6.5%
Race/Ethnic Group: Enrollments			
Black/African-American	1,791	1,826	1,913
Native American	19	23	22
Asian	431	409	428
Hispanic	175	179	205
White	7,730	7,518	7,303
Other	624	619	691
[Missing Data]	[54]	[53]	[65]

ENROLLMENTS BY CURRICULUM

DIVISION AND CURRICULUM		FALL 2004	FALL 2005	FALL 2006	CHANGE 2005-2006	
					%	#
COMM	Communication Arts-Applied	246	225	212	-5.8%	-13
JOUR	Communication Arts-Journalism	56	63	77	22.2%	14
THEA	Communication Arts-Theater	15	19	30	57.9%	11
PHOT	Photography			1		1
CART	Graphic Design	136	143	126	-11.9%	-17
GEN	General Studies	260	230	246	7.0%	16
LA	Liberal Arts	2,591	2,394	2,430	1.5%	36
COMMUNICATIONS/ARTS & HUMANITIES TOTAL		3,304	3,074	3,122	1.6%	48
HSCI	Science for Health Professions	1,485	1,306	993	-24.0%	-313
NSCI	Natural Science	142	144	135	-6.3%	-9
EGR	Engineering	156	148	154	4.1%	6
CHEM	Chemical Technician*	3	1	1	0.0%	0
MATH/SCIENCE/ENGINEERING TOTAL		1,786	1,599	1,283	-19.8%	-316
AHM	Health Care Management	47	52	51	-1.9%	-1
HSTU	Health Studies--General	12	111	118	6.3%	7
HSTN	Health Studies--Pre-Nursing		164	612	273.2%	448
AHU	Health Unit Coordinator	22	20	19	-5.0%	-1
AHMC	Managed Care Certificate	4	1	1	0.0%	0
MED	Medical Assistant	73	66	66	0.0%	0
CMED	Medical Assistant (Cert)	18	20	30	50.0%	10
MCB	Medical Coding and Billing (Cert)	87	109	38	-65.1%	-71
MC	Medical Coding			61		61
MCH	Medical Coding Health Care Profession			15		15
MOC	Medical Office Coordinator	14	5	4	-20.0%	-1
MEDT	Medical Transcription	14	5	0	-100.0%	-5
NUAD	Nursing Assistant	28	11	5	-54.5%	-6
NURS	Nursing	313	329	360	9.4%	31
NURP	Perioperative Nursing (Cert)	61	66	46	-30.3%	-20
PCA	Patient Care Certificate			2		2
RESP	Respiratory Therapy	12	10	20	100.0%	10
ORT	Surgical Technology	21	21	14	-33.3%	-7
ALLIED HEALTH/NURSING TOTAL		726	990	1,462	47.7%	472
ACC	Professional Accounting	28	21	27	28.6%	6
ACCT	Accounting	126	144	118	-18.1%	-26
BANK	Banking	0	1	0	-100.0%	-1
BUAD	Business Administration	648	732	764	4.4%	32
BUAC	Business Administration - Accounting Option	96	106	109	2.8%	3
BUSS	Business Administration - Sport Mgmt Option		1	18	1700.0%	17
BUMG	Business Administration - Mgmt. Option	184	159	134	-15.7%	-25
BUMR	Business Administration - Marketing Option	88	88	66	-25.0%	-22
BUSM	Business Management	350	313	320	2.2%	7
BGEN	General Business	40	50	46	-8.0%	-4
BSTC	Business Technology	33	19	14	-26.3%	-5
ECM	Electronic Commerce	11	2	2	0.0%	0
ECMC	Electronic Commerce (Cert)	1	0	2		2
DPM	Help Desk/Technical Support	13	15	16	6.7%	1
DPR	CIS - Data Processing*	1	0	0		0

Enrollment by Curriculum – Continued

DIVISION AND CURRICULUM		FALL 2004	FALL 2005	FALL 2006	CHANGE 2005-2006	
					%	#
DPRM	CIS – Microcomputers in Business	7	6	4	-33.3%	-2
DPRN	CIS – Network Engineering	65	51	52	2.0%	1
DPRP	Info Tech - Computer Programming	81	59	55	-6.8%	-4
DPRS	Computer Information Systems	156	135	131	-3.0%	-4
ITCA	Info Tech – Comp Applications		2	4	100.0%	2
ITGD	Info Tech – Game Development		12	28	133.3%	16
ITWD	Info Tech – Web Development		5	10	100.0%	5
IMM	Info Tech – Interactive Multimedia	39	31	19	-38.7%	-12
IMMC	Info Tech – Interactive Multimedia (Cert)	10	4	6	50.0%	2
HRM	Hotel/Restaurant Management	77	79	76	-3.8%	-3
CHRM	Human Resource Management	30	28	45	60.7%	17
WEB	Web Development Certificate	15	26	17	-34.6%	-9
PLG	Paralegal Studies	107	95	89	-6.3%	-6
CPLG	Paralegal Studies (Cert)	27	25	17	-32.0%	-8
RETM	Retail Management	0	0	0		0
ASEC	Microsoft Office Specialist (Office Admin)	16	13	4	-69.2%	-9
SEC	Secretarial Certificate*	2	2	0	-100.0%	-2
BUSC	Small Business Management	24	27	27	0.0%	0
CSBM	Small Business Management (Cert)	3	11	8	-27.3%	-3
BUSINESS TOTAL		2,278	2,262	2,228	-1.5%	-34
ADJ	Administration of Justice	220	244	216	-11.5%	-28
BANT	Behavioral Science-Anthropology	9	4	6	50.0%	2
BPSY	Behavioral Science-Psychology	349	357	327	-8.4%	-30
BSOC	Behavioral Science-Sociology	86	81	82	1.2%	1
ECE	Early Childhood Education	228	212	242	14.2%	30
EDUC	Education	773	729	663	-9.1%	-66
PUBLIC SERVICE/SOCIAL SCIENCE TOTAL		1,665	1,627	1,536	-5.6%	-91
ARC	Architectural Technology	59	48	40	-16.7%	-8
ROBO	Automated Manufacturing/Robotics	18	24	18	-25.0%	-6
CROB	Automated Manufacturing/Robotics (Cert)	1	0	0		0
AUT	Auto Mechanics 1 (Cert)	18	12	22	83.3%	10
AUTC	Auto Technology (Cert)	10	0	1		1
AUTO	Auto Technology	37	43	39	-9.3%	-4
ISTB	Biomedical Equipment Tech	10	11	8	-27.3%	-3
BDM	Building Maintenance	15	14	3	-78.6%	-11
CNC	Lathe and Mill (Cert)	1	1	0	-100.0%	-1
CPT	Carpentry (Residential)	63	61	71	16.4%	10
CPTC	Finish Carpentry	7	12	9	-25.0%	-3
DDT	Computer-Aided Drafting/Design Technology	40	27	18	-33.3%	-9
CDDT	Computer-Aided Drafting/Design Tech(Cert)	6	6	7	16.7%	1
DDTC	Computer-Aided Drafting/Design Tech(Cert)			1		1
COT	Computer Service/Repair Technology	20	25	10	-60.0%	-15
CTEC	Construction Management Technology	49	44	37	-15.9%	-7
CSUP	Construction Supervisor		7	8	14.3%	1
ELT	Electrical	74	101	117	15.8%	16
ETEC	Electronics Technology	36	30	43	43.3%	13

Enrollment by Curriculum - Continued

DIVISION AND CURRICULUM		FALL 2004	FALL 2005	FALL 2006	CHANGE 2005-2006	
					%	#
EMF	Emergency Mgmt & Planning - Fire Science			21		21
EMH	Emergency Mgmt & Planning - HAZMAT	1	1	1	0.0%	0
EMS	Emergency Medical Services Technology	35	16	28	75.0%	12
EMTP	Paramedic-Advanced Life Support	35	35	40	14.3%	5
EMM	Emergency Mgmt & Planning - EMT	6	14	3	-78.6%	-11
EMP	Emergency Mgmt & Planning - Police	20	23	17	-26.1%	-6
FTEC	Facility Management Technology	3	6	6	0.0%	0
FST	Fire Science Technology	25	22	11	-50.0%	-11
HVA	Heating, Vent., Air Cond. & Refrig Tech	81	49	53	8.2%	4
HVAC	Heating, Vent., Air Cond. & Refrig (Cert)	31	82	72	-12.2%	-10
ISTD	Industrial Systems Tech-D			4		4
MTT	Machine Tool Technology	48	27	31	14.8%	4
MTC1	MachiningOperations Level 1	0	7	3	-57.1%	-4
MTC2	MachiningOperations Level 2			4		4
ATEC	Mechanical Technology	24	35	30	-14.3%	-5
NMT	Nanofabrication Manufacturing Technology	4	3	1	-66.7%	-2
MPT	Municipal Police Training	60	62	58	-6.5%	-4
PLB	Plumbing Apprenticeship	121	129	129	0.0%	0
PWR	Power Utility Technician	16	6	4	-33.3%	-2
PCT	Process Control Technology	13	8	6	-25.0%	-2
TSTU	Technical Studies	45	49	20	-59.2%	-29
TELC	Telecommunications	8	8	1	-87.5%	-7
WLD	Welding	15	10	1	-90.0%	-9
TECHNICAL EDUCATION TOTAL		1,065	1,075	996	-7.3%	-79
COLLEGE TOTAL		10,824	10,627	10,627	0.0%	0
* Discontinued majors						

FTE's BY CURRICULUM

DIVISION AND CURRICULUM		FALL 2004	FALL 2005	FALL 2006	CHANGE 2005-2006	
					%	#
COMM	Communication Arts-Applied	204.0	191.9	174.8	-8.9%	-17.2
JOUR	Communication Arts-Journalism	43.3	50.5	59.7	18.2%	9.2
THEA	Communication Arts-Theater	12.6	16.8	25.8	54.2%	9.1
PHOT	Photography			0.3		0.3
CART	Graphic Design	109.7	106.5	101.6	-4.6%	-4.9
GEN	General Studies	167.3	140.9	155.5	10.3%	14.6
LA	Liberal Arts	1749.8	1670.1	1693.8	1.4%	23.8
COMMUNICATIONS/ARTS & HUMANITIES TOTAL		2286.5	2176.7	2,211.4	1.6%	34.7
HSCI	Science for Health Professions	1024.3	883.0	680.0	-23.0%	-203.0
NSCI	Natural Science	103.7	105.3	105.3	0.0%	0.0
EGR	Engineering	114.3	110.2	119.8	8.7%	9.6
CHEM	Chemical Technician*	1.8	1.0	0.3	-67.0%	-0.7
MATH/SCIENCE/ENGINEERING TOTAL		1244.2	1099.4	905.3	-17.7%	-194.1
AHM	Health Care Management	27.9	33.8	29.6	-12.4%	-4.2
HSTU	Health Studies--General	8.5	70.9	68.8	-2.9%	-2.1
HSTN	Health Studies--Pre-Nursing		103.0	371.7	260.8%	268.7
AHU	Health Unit Coordinator	11.9	9.8	12.3	24.6%	2.4
AHMC	Managed Care Certificate	2.6	0.5	0.8	50.0%	0.3
MED	Medical Assistant	52.3	48.0	51.3	6.8%	3.3
CMED	Medical Assistant (Cert)	13.8	12.1	19.0	57.5%	6.9
MCB	Medical Coding and Billing	37.3	58.3	16.7	-71.4%	-41.7
MC	Medical Coding			30.3		30.3
MCH	Medical Coding Health Care Profession			7.3		7.3
MOC	Medical Office Coordinator	6.3	3.3	2.5	-23.1%	-0.8
MEDT	Medical Transcription	6.2	2.7	0.0	-100.0%	-2.7
NUAD	Nursing Assistant	12.3	6.8	2.1	-69.2%	-4.7
NURS	Nursing	240.5	257.1	290.6	13.0%	33.5
NURP	Perioperative Nursing (Cert)	21.8	22.3	13.8	-38.2%	-8.5
PCA	Patient Care Certificate			0.7		0.7
RESP	Respiratory Therapy	9.8	9.0	17.5	94.4%	8.5
ORT	Surgical Technology	17.8	18.7	11.5	-38.4%	-7.2
ALLIED HEALTH/NURSING TOTAL		469.0	656.1	946.2	44.2%	290.1
ACC	Professional Accounting	9.0	7.3	10.3	41.4%	3.0
ACCT	Accounting	74.3	83.5	65.9	-21.1%	-17.6
BANK	Banking	0.0	0.3	0.0	-100.0%	-0.3
BUAD	Business Administration	501.3	577.7	618.8	7.1%	41.1
BUAC	Business Administration - Accounting Option	63.7	76.9	76.9	0.0%	0.0
BUSS	Business Administration - Sport Mgmt Option		1.0	16.5	1550.0%	15.5
BUMG	Business Administration - Mgmt. Option	129.8	116.0	102.7	-11.5%	-13.3
BUMR	Business Administration - Marketing Option	69.8	69.6	51.8	-25.6%	-17.8
BUSM	Business Management	236.2	211.1	231.4	9.6%	20.3
BGEN	General Business	29.8	35.1	32.8	-6.6%	-2.3
BSTC	Business Technology	18.7	10.3	9.8	-4.9%	-0.5
ECM	Electronic Commerce	4.3	1.8	1.3	-31.7%	-0.6
ECMC	Electronic Commerce (Cert)	0.3	0.0	1.3		1.3
DPM	Help Desk/Technical Support	7.2	8.6	10.4	21.4%	1.8
DPR	CIS - Data Processing*	0.3	0.0	0.0		0.0

FTE's by Curriculum - Continued

DIVISION AND CURRICULUM		FALL 2004	FALL 2005	FALL 2006	CHANGE 2005-2006	
					%	#
DPRM	CIS - Microcomputers in Business	3.6	2.1	0.9	-55.8%	-1.2
DPRN	CIS - Network Engineering	33.4	30.4	31.3	3.0%	0.9
DPRP	CIS - Computer Programming	51.8	36.9	38.0	2.9%	1.1
DPRS	Computer Information Systems	110.1	95.2	97.0	1.9%	1.8
ITCA	Info Tech - Comp Applications		0.8	4.0	433.3%	3.3
ITGD	Info Tech - Game Development		11.5	23.8	106.5%	12.3
ITWD	Info Tech - Web Development		2.6	8.8	239.1%	6.2
IMM	Interactive Multimedia	26.4	21.6	13.4	-37.8%	-8.2
IMMC	Interactive Multimedia (Cert)	4.9	1.3	2.0	50.4%	0.7
HRM	Hotel/Restaurant Management	61.2	60.3	59.1	-1.9%	-1.2
CHRM	Human Resource Management	15.7	16.1	25.9	61.2%	9.8
WEB	Web Development Certificate	7.8	10.0	10.3	2.5%	0.3
PLG	Paralegal Studies	74.0	58.1	59.0	1.6%	0.9
CPLG	Paralegal Studies (Cert)	10.8	10.4	8.5	-18.4%	-1.9
RETM	Retail Management	0.0	0.0	0.0		0.0
ASEC	Microsoft Office Specialist (Office Adm)	8.6	7.4	2.0	-73.0%	-5.4
SEC	Secretarial Certificate*	0.8	0.6	0.0	-100.0%	-0.6
BUSC	Small Business Management	17.8	18.8	19.3	2.7%	0.5
CSBM	Small Business Management (Cert)	2.3	5.8	3.8	-33.4%	-1.9
BUSINESS TOTAL		1573.5	1588.7	1,636.6	3.0%	48.0
ADJ	Administration of Justice	176.6	190.0	166.1	-12.6%	-23.9
BANT	Behavioral Sciences-Anthropology	6.0	3.5	4.8	35.7%	1.3
BPSY	Behavioral Sciences-Psychology	265.8	279.8	255.9	-8.5%	-23.8
BSOC	Behavioral Sciences-Sociology	62.1	63.4	55.8	-12.1%	-7.7
ECE	Early Childhood Education	162.7	146.5	148.1	1.1%	1.6
EDUC	Education	577.3	566.7	531.3	-6.3%	-35.4
PUBLIC SERVICE/SOCIAL SCIENCE TOTAL		1250.5	1249.8	1161.8	-7.0%	-88.0
ARC	Architectural Technology	41.4	35.9	30.4	-15.3%	-5.5
ROBO	Automated Manufacturing/Robotics	12.4	19.1	14.7	-23.1%	-4.4
CROB	Automated Manufacturing/Robotics (Cert)	0.3	0.0	0.0		0.0
AUT	Auto Mechanics I (Cert)	12.3	10.5	12.1	15.0%	1.6
AUTC	Auto Mechanics II (Cert)	8.3	0.0	0.3		0.3
AUTO	Auto Technology	28.1	33.2	31.3	-5.8%	-1.9
ISTB	Biomedical Instrument Technology	6.0	6.8	6.5	-4.8%	-0.3
BDM	Building Maintenance	5.4	3.8	1.6	-57.9%	-2.2
CNC	Lathe and Mill (Cert)	0.3	0.5	0.0	-100.0%	-0.5
CPT	Carpentry (Residential)	31.6	33.6	34.7	3.2%	1.1
CPTC	Finish Carpentry	5.8	8.8	7.7	-13.1%	-1.2
DDT	Computer-Aided Drafting/Design Technology	24.2	18.1	11.6	-36.0%	-6.5
CDDT	Computer-Aided Drafting/Design Tech (Cert)	2.0	2.3	2.0	-14.2%	-0.3
DDTC	Computer-Aided Drafting/Design Tech (Cert)			0.5		0.5
COT	Computer Service/Repair Technology	15.7	18.9	8.3	-56.0%	-10.6
CTEC	Construction Management Technology	26.9	23.7	23.1	-2.5%	-0.6
CSUP	Construction Supervisor		3.3	4.5	38.5%	1.3
ELT	Electrical	42.1	56.5	63.3	12.1%	6.8
ETEC	Electronics Technology	25.1	19.0	32.5	71.1%	13.5

FTE's by Curriculum - Continued

DIVISION AND CURRICULUM		FALL 2004	FALL 2005	FALL 2006	CHANGE 2005-2006	
					%	#
EMF	Emergency Mgmt & Planning - Fire	6.9	13.2	16.3	23.4%	3.1
EMH	Emergency Mgmt & Planning - HAZ	1.0	0.3	0.5	100.0%	0.3
EMS	Emergency Medical Services Technology	21.9	9.4	18.1	91.9%	8.7
EMTP	Paramedic-Advanced Life	26.1	25.9	30.6	18.0%	4.7
EMM	Emergency Mgmt & Planning - EMT	2.8	9.8	2.3	-76.9%	-7.5
EMP	Emergency Mgmt & Planning - Police	11.7	13.8	9.6	-30.7%	-4.3
FTEC	Facility Management	2.3	3.1	3.9	27.3%	0.8
FST	Fire Science Technology	16.6	15.0	7.1	-52.8%	-7.9
HVA	Heating, Vent., Air Cond.& Refrig	33.1	31.3	28.3	-9.6%	-3.0
HVAC	Heating, Vent., Air Cond.& Refrig (Cert)	16.2	37.3	34.1	-8.5%	-3.2
ISTD	Industrial Systems Tech-D			4.0		4.0
MTT	Machine Tool Technology	25.6	16.2	24.8	53.1%	8.6
MTC1	MachiningOperations Level 1		4.0	3.0	-25.0%	-1.0
MTC2	MachiningOperations Level 2			1.5		1.5
ATEC	Mechanical Technology	16.2	25.6	23.5	-8.1%	-2.1
NMT	Nanofabrication Manufacturing Technology	3.2	2.8	1.0	-64.7%	-1.8
MPT	Municipal Police Training	54.1	55.3	51.2	-7.5%	-4.2
PLB	Plumbing Apprenticeship	69.8	74.1	71.7	-3.3%	-2.4
PWR	Power Utility Technician	15.3	4.5	2.1	-53.8%	-2.4
PCT	Process Control Technology	10.8	7.5	2.7	-64.4%	-4.8
TSTU	Technical Studies	15.5	19.1	7.3	-61.6%	-11.8
TELC	Telecommunications	3.8	4.2	1.0	-76.0%	-3.2
WLD	Welding Technology	3.5	2.0	0.5	-75.0%	-1.5
TECHNICAL EDUCATION		644.1	668.2	629.7	-5.8%	-38.4
COLLEGE TOTALS		7467.7	7438.8	7491.1	0.7%	52.3

Note: College totals may differ slightly from those on Page 2 due to rounding.

* Discontinued majors.

CREDITS BY DISCIPLINE

		<u>FALL</u>	<u>FALL</u>	<u>FALL</u>	<u>CHANGE 2005-06</u>	
		<u>2004</u>	<u>2005</u>	<u>2006</u>	%	#
ARB	Arabic	45	24	48	100.0%	24
ART	Art	1,707	1,509	1,323	-12.3%	-186
DRA	Drama	336	360	438	21.7%	78
GRA	Graphic Design	708	708	756	6.8%	48
HUM	Humanities	1251	1647	1800	9.3%	153
FRE	French	159	141	192	36.2%	51
GER	German	54	72	57	-20.8%	-15
ITA	Italian	75	75	111	48.0%	36
SPA	Spanish	1338	1299	1221	-6.0%	-78
MUS	Music	534	423	372	-12.1%	-51
PHI	Philosophy	1008	1068	948	-11.2%	-120
<u>ARTS & HUMANITIES SUBTOTAL</u>		<u>7,215</u>	<u>7,326</u>	<u>7,266</u>	<u>-0.8%</u>	<u>-60</u>
ENG	English	8,289	8,541	8,529	-0.1%	-12
ENG	Transitional English	3,039	2,825	2,937	4.0%	112
ESL	English as a Second Language	2,320	2,606	3,056	17.3%	450
REA	Reading	234	162	198	22.2%	36
REA	Transitional Reading	2602	2515	2370	-5.8%	-145
SPE	Speech	2403	2592	2241	-13.5%	-351
<u>COMMUNICATIONS SUBTOTAL</u>		<u>18,887</u>	<u>19,241</u>	<u>19,331</u>	<u>0.5%</u>	<u>90</u>
ARTS/HUMANITIES/COMMUNICATIONS TOTAL		26,102	26,567	26,597	0.1%	30
BIO	Biology	4,194	4,313	4,535	5.1%	222
CHE	Chemistry	1,516	1,497	1,397	-6.7%	-100
ESS	Earth and Space Science			584		584
PHS	Physical Science	2,465	2,287	1,209	-47.1%	-1,078
PHY	Physics	681	493	507	2.8%	14
SCI	Science	256	236	252	6.8%	16
MAT	Mathematics	6,561	6,592	6,876	4.3%	284
MAT	Transitional Math	5,082	4,857	4,785	-1.5%	-72
EGR	Engineering	180	110	89	-19.1%	-21
MATH/SCIENCE/ENGINEERING TOTAL		20,935	20,385	20,234	-0.7%	-151
AHA	Allied Health Admin	330	480	405	-15.6%	-75
AHM	Allied Health Medical	1286	1410	1727	22.5%	317
AHN	Allied Health Nursing	96	104	88	-15.4%	-16
AHS	Allied Health Surg Tech	120	170	120	-29.4%	-50
AHU	Allied Health Unit Clerk	36	42	54	28.6%	12
NUS	Perioperative Nursing	156	144	60	-58.3%	-84
NUS	Nursing	2,939	3,019	3,410	13.0%	391
RTH	Respiratory Therapy	170	163	169	3.7%	6
ALLIED HEALTH/NURSING TOTAL		5,133	5,532	6,033	9.1%	501

Credits by Discipline - Continued		<u>FALL</u>	<u>FALL</u>	<u>FALL</u>	<u>CHANGE 2005-06</u>	
		<u>2004</u>	<u>2005</u>	<u>2006</u>	%	#
ACC	Accounting	2,000	1,987	2,057	3.5%	70
BUS	Business	5,454	5,259	5,460	3.8%	201
DPR	Computer Information Systems	4,609	4,723	4,845	2.6%	122
HRM	Hotel/Restaurant Mgmt	221	234	223	-4.7%	-11
IMM	Interactive Multimedia	369	342	381	11.4%	39
MATH	Business Math	231	258	207	-19.8%	-51
MCR	Microcomputers	19	16	17	6.3%	1
NET	Network Engineering	339	192	260	35.4%	68
OFF	Office Administration	162	75	0	-100.0%	-75
PLG	Paralegal Studies	540	474	456	-3.8%	-18
BUSINESS TOTAL		13,944	13,560	13,906	2.6%	346
ADJ	Administration of Justice	1,350	1,440	1,224	-15.0%	-216
ECE	Early Childhood Education	933	916	979	6.9%	63
ECO	Economics	1284	1398	1323	-5.4%	-75
EDU	Education	768	843	906	7.5%	63
HIS	History	5,238	5,304	5,088	-4.1%	-216
INT	Interdisciplinary	468	393	450	14.5%	57
POL	Political Science	1446	1359	1281	-5.7%	-78
PSY	Psychology	6,438	6,300	6,630	5.2%	330
SOC	Sociology	3,663	3,540	3,399	-4.0%	-141
PUBLIC SERVICE/SOCIAL SCIENCE TOTAL		21,588	21,493	21,280	-1.0%	-213
AUT	Automotive Technology	473	367	395	7.6%	28
BDM	Building Maintenance	36	0	0		0
CPT	Carpentry	372	394	403	2.3%	9
ELT	Electrical	672	732	782	6.8%	50
EMS	Emergency Services	680	601	536	-10.8%	-65
FST	Fire Science Technology	96	96	102	6.3%	6
HMT	Hazardous Materials Technology	0	1	0		-1
HVA	Heating, Vent., & Air Cond	608	768	646	-15.9%	-122
MTT	Machine Tool Technology	184	187	278	48.7%	91
MPT	Municipal Police Training	1010	1023	1039	1.6%	16
OCS	OCS Building Code	66	69	87	26.1%	18
PCT	Process Control Technology	83	64	4	-93.8%	-60
PLB	Plumbing Apprenticeship	869	890	867	-2.6%	-23
TEL	Electronics Tech	221	248	278	12.1%	30
TME	Automated Mfg and Mechanical Tech	89	179	181	1.1%	2
WLD	Welding	82	40	6	-85.0%	-34
<u>JOB SKILLS SUBTOTAL</u>		<u>5541</u>	<u>5659</u>	<u>5604</u>	<u>-1.0%</u>	<u>-55</u>
ARC	Architectural Tech	63	54	42	-22.2%	-12
TCC	Technologies	393	366	405	10.7%	39
TCS	Construction Tech	312	258	234	-9.3%	-24
TDD	Drafting/Design Tech	48	15	48	220.0%	33
<u>TECHNOLOGIES SUBTOTAL</u>		<u>816</u>	<u>693</u>	<u>729</u>	<u>5.2%</u>	<u>36</u>
TECHNICAL EDUCATION		6,357	6,352	6,333	-0.3%	-19
COLLEGE TOTALS		94,059	93,889	94,383	0.5%	494

Contracted Credits

Included in the Credits by Discipline are the following contracted credits

	<u>Fall 2004</u>	<u>Fall 2005</u>	<u>Fall 2006</u>	<u>Change 2005-06</u>	
				%	#
Communications, Arts & Humanities					
English		--	--		
Speech		--	--		
Math, Science, Engineering					
Biology		--	--		
Chemistry		--	--		
Mathematics	16	33	--		-33
Physical science	42	--	--		
Physics	51	--	--		
Allied Health/Nursing					
Allied Health Medical	30	--	78		78
Allied Health Nursing	96	72	4	-94.4%	-68
Business					
Accounting		--	48		48
Business	21	60	90	50.0%	30
Computer Information Systems		57	--		-57
Business Math		--	--		
Public Service/Social Science					
Economics		--	--		
Interdisciplinary	84	27	--		-27
Technical Education					
Automotive Technology	64	--	--		
Electrical	130	--	--		
Emergency Medical Technology		--	--		
Machine Tool Technology	162	45	56	24.4%	11
Mechanical Technology			12		12
Plumbing Apprenticeship	869	890	867	-2.6%	-23
Process Control Tech		64	--		-64
Construction Technology		--	--		
Electronics Technology		--	--		
Automated Mfg and Mechanical Tech		--	--		
Welding		--	--		
Total	1,565	1,248	1,155	-7.5%	-93

SPONSORING DISTRICT ENROLLMENT

<u>School District</u>	<u>Fall</u>	<u>Fall</u>	<u>Fall</u>	<u>Change 2005 - 2006</u>	
	<u>2004</u>	<u>2005</u>	<u>2006</u>	%	#
Haverford	629	634	595	-6.2%	-39
Interboro	564	538	531	-1.3%	-7
Radnor	146	161	163	1.2%	2
Ridley	609	636	602	-5.3%	-34
Rose Tree Media	490	470	464	-1.3%	-6
Southeast Delco	687	669	687	2.7%	18
Springfield	482	503	498	-1.0%	-5
Upper Darby	1865	1795	1799	0.2%	4
William Penn	597	591	581	-1.7%	-10
Garnet Valley-Bethel	103	89	75	-15.7%	-14
Wallingford-Swarthmore	91	89	112	25.8%	23
Unknown/Reciprocity	81	76	87	14.5%	11
TOTAL SPONSORING	6,344	6,251	6,194	-0.9%	-57
Percentage of College Total	58.6%	58.8%	58.3%		
COLLEGE TOTAL	10,824	10,627	10,627	0.0%	0

NONSPONSORING DISTRICT ENROLLMENT

<u>School District</u>	<u>Fall</u>	<u>Fall</u>	<u>Fall</u>	<u>Change 2005 - 06</u>	
	<u>2004</u>	<u>2005</u>	<u>2006</u>	%	#
Chester Upland	238	206	206	0.0%	0
Chichester	186	184	193	4.9%	9
Marple Newtown	305	289	299	3.5%	10
Penn Delco	347	311	320	2.9%	9
Garnet Valley	98	97	85	-12.4%	-12
Wallingford-Swarthmore	109	104	91	-12.5%	-13
West Chester-Delaware County	7	1	2	100.0%	1
TOTAL DELAWARE COUNTY					
NONSPONSORING	1,290	1,192	1,196	0.3%	4
Percentage of College Total	11.9%	11.2%	11.3%		
Chester County	2,423	2,386	2,416	1.3%	30
All Other Outside Delaware Co.	660	696	719	3.3%	23
TOTAL OUTSIDE DELAWARE CO.	3,083	3,082	3,135	1.7%	53
Percent of College Total	28.5%	29.0%	29.5%		
Unknown	107	102	102	0.0%	0
NONSPONSORING TOTAL	4,480	4,376	4,433	1.3%	57
Percent of College Total	41.4%	41.2%	41.7%		
COLLEGE TOTAL	10,824	10,627	10,627	0.0%	0

ENROLLMENT BY CHESTER COUNTY DISTRICTS

School District	Fall 2004	Fall 2005	Fall 2006	Change 2005-06	
				%	#
Avon Grove	100	82	92	12.2%	10
Coatesville Area	394	371	383	3.2%	12
Downingtown Area	546	593	629	6.1%	36
Great Valley	177	175	154	-12.0%	-21
Kennett Consolidated	89	88	86	-2.3%	-2
Octorara Area	76	68	65	-4.4%	-3
Owen J. Roberts	27	25	22	-12.0%	-3
Oxford Area	41	36	50	38.9%	14
Phoenixville Area	70	72	82	13.9%	10
Tredyffrin/Easttown	107	97	91	-6.2%	-6
Unionville/Chadds Ford	38	30	39	30.0%	9
West Chester Area	675	658	636	-3.3%	-22
Other Chester County	83	91	87	-4.4%	-4
TOTAL CHESTER COUNTY	2,423	2,386	2,416	1.3%	30

DISTRIBUTION OF REGISTRATIONS AT SITES

<u>SITE</u>	<u>Fall 2004</u>	<u>Fall 2005</u>	<u>Fall 2006</u>	<u>Change 2005-2006</u>	
				%	#
DELAWARE COUNTY					
<u>Marple Campus</u>					
Day	15,636	15,453	15,367	-0.6%	-86
Evening	3,856	3,644	3,677	0.9%	33
Weekend/Other	223	226	183	-19.0%	-43
Distance education	2,132	2,228	2,031	-8.8%	-197
Total	21,847	21,551	21,258	-1.4%	-293
<u>Southeast/Collingdale</u>					
Day	1195	1215	1251	3.0%	36
Evening	795	862	904	4.9%	42
Weekend	97	64	71	10.9%	7
Total	2,087	2,141	2,226	4.0%	85
<u>Malin Road</u>					
Day	868	891	917	2.9%	26
Evening	934	961	897	-6.7%	-64
Weekend/Other	12	17	0	-100.0%	-17
Total	1,814	1,869	1,814	-2.9%	-55
<u>Upper Darby</u>					
Evening	177	136	--		
Total	177	136	--		
<u>Other Delaware County</u>					
Day	44	32	--		
Evening	30	8	--		
Other	0	0	--		
Total	74	40	--		
CHESTER COUNTY					
<u>Alliance</u>					
Evening	--	--	--		
Total	--	--	--		
<u>Chester County Hospital</u>					
Day	74	70	88	25.7%	18
Evening			32		32
Total	74	70	120	71.4%	50
<u>Downingtown</u>					
Day	1818	1594	1650	3.5%	56
Evening	489	459	417	-9.2%	-42
Weekend	0	0	14		14
Distance Education	0	43	13	-69.8%	-30
Total	2,307	2,096	2,094	-0.1%	-2
<u>Exton Center</u>					
Day	893	1,184	1,443	21.9%	259
Evening	506	597	611	2.3%	14
Distance Education	0	33	83	151.5%	50
Total	1,399	1,814	2,137	17.8%	323
<u>Oxford</u>					
Day			12		12
Total			12		12
Other Chester County					
Evening	0	67	46	-31.3%	-21
Total	0	67	46	-31.3%	-21
<u>College Totals</u>					
Day	20,528	20,439	20,728	1.4%	289
Evening	6,787	6,734	6,584	-2.2%	-150
Weekend/Other	332	307	268	-12.7%	-39
Distance Education	2,132	2,304	2,127	-7.7%	-177
Grand Total	29,779	29,784	29,707	-0.3%	-77

STUDENTS ATTENDING EACH SESSION (DAY/EVENING/WEEKEND/DISTANCE)

	<u>Fall 2004</u>	<u>Fall 2005</u>	<u>Fall 2006</u>	<u>Change 2005-2006</u>	
				%	#
Day	7,111	7,016	7,102	1.2%	86
Day, On campus	5,488	5,380	5,397	0.3%	17
Evening	4,693	4,558	4,465	-2.0%	-93
Weekend	299	267	245	-8.2%	-22
Distance	1,515	1,598	1,435	-10.2%	-163

PATTERN OF ON- AND OFF-CAMPUS ATTENDANCE

Total Students Attending the Sites

	<u>Fall 2004</u>	<u>Fall 2005</u>	<u>Fall 2006</u>	<u>Change 2005-06</u>	
				%	#
DELAWARE COUNTY					
Marple	8,253	8,083	8,003	-1.0%	-80
Southeast/Collingdale	1,050	1,053	1,107	5.1%	54
Malin Road	809	817	787	-3.7%	-30
Upper Darby	157	123	--		-123
Other Delco	58	28	--		-28

CHESTER COUNTY

Chester County Hospital	67	65	97	49.2%	32
Downingtown	1,035	977	977	0.0%	0
Exton	798	949	1,050	10.6%	101
Oxford			12		12
Other Chester County	0	21	18	-14.3%	-3

Total Number of FTE's at Each Site

	<u>Fall 2004</u>	<u>Fall 2005</u>	<u>Fall 2006</u>	<u>Change 2005-06</u>	
				%	#
DELAWARE COUNTY					
Marple	5,544.3	5,458.2	5,422.0	-0.7%	-36.2
Southeast/Collingdale	520.4	529.8	554.8	4.7%	24.9
Malin Road	428.6	437.7	427.6	-2.3%	-10.1
Upper Darby	44.3	34.0	--		-34.0
Other Delaware County	18.8	11.3	--		-11.3

CHESTER COUNTY

Chester County Hospital	46.8	44.0	69.1	57.0%	25.1
Downingtown	575.4	525.8	533.0	1.4%	7.2
Exton	349.3	451.8	537.7	19.0%	85.9
Oxford			3.0		3.0
Other Chester County	0.0	13.3	11.5	-13.2%	-1.8

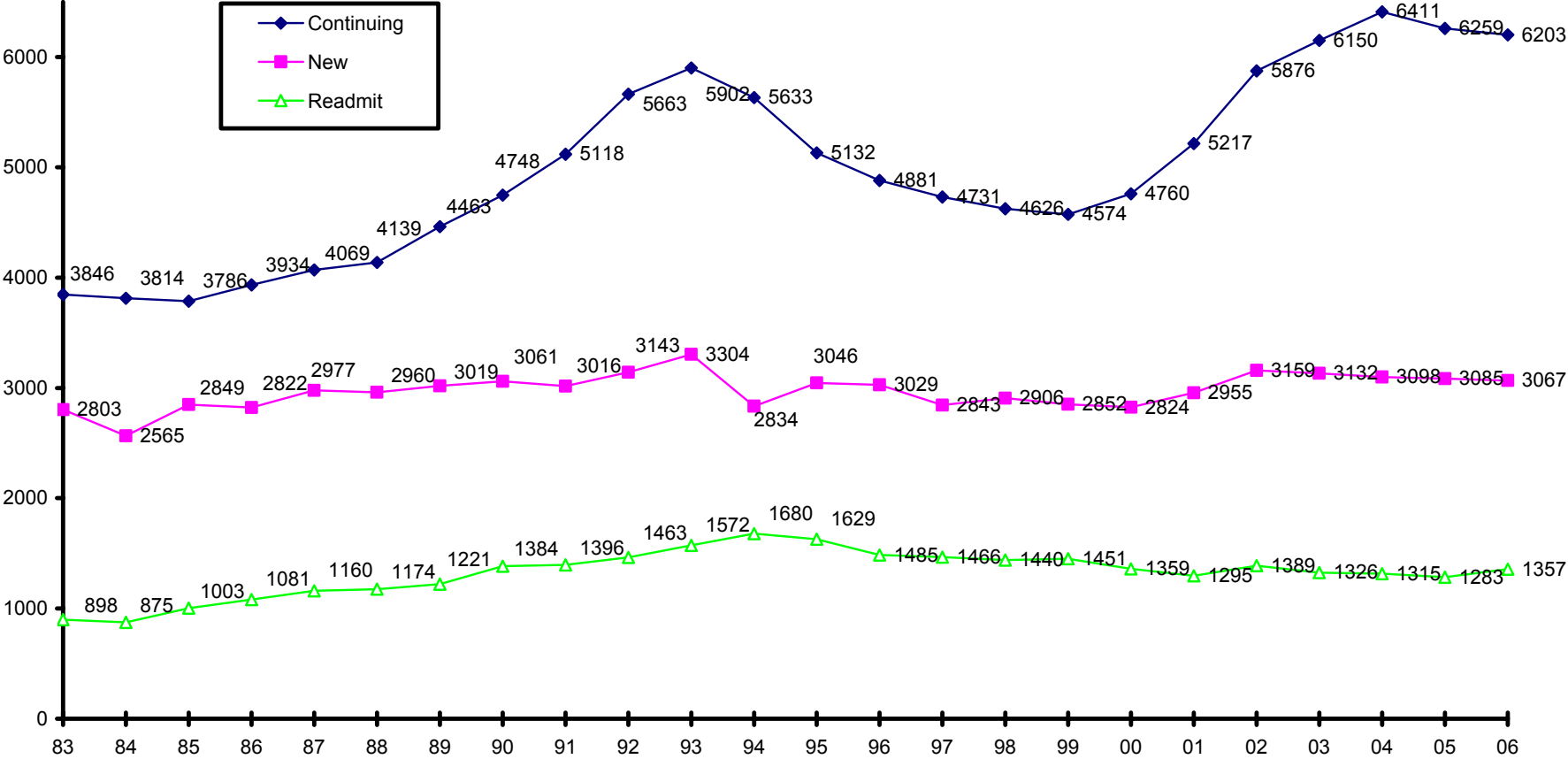
Total Credits at Each Site

	<u>Fall 2004</u>	<u>Fall 2005</u>	<u>Fall 2006</u>	<u>Change 2005-06</u>	
				%	#
DELAWARE COUNTY					
Marple	69,525	68,613	67,962	-0.9%	-651
Southeast/Collingdale	6,306	6,417	6,732	4.9%	315
Malin Road	5,646	5,719	5,652	-1.2%	-67
Upper Darby	531	408	--		-408
Other Delaware County	226	136	--		-136

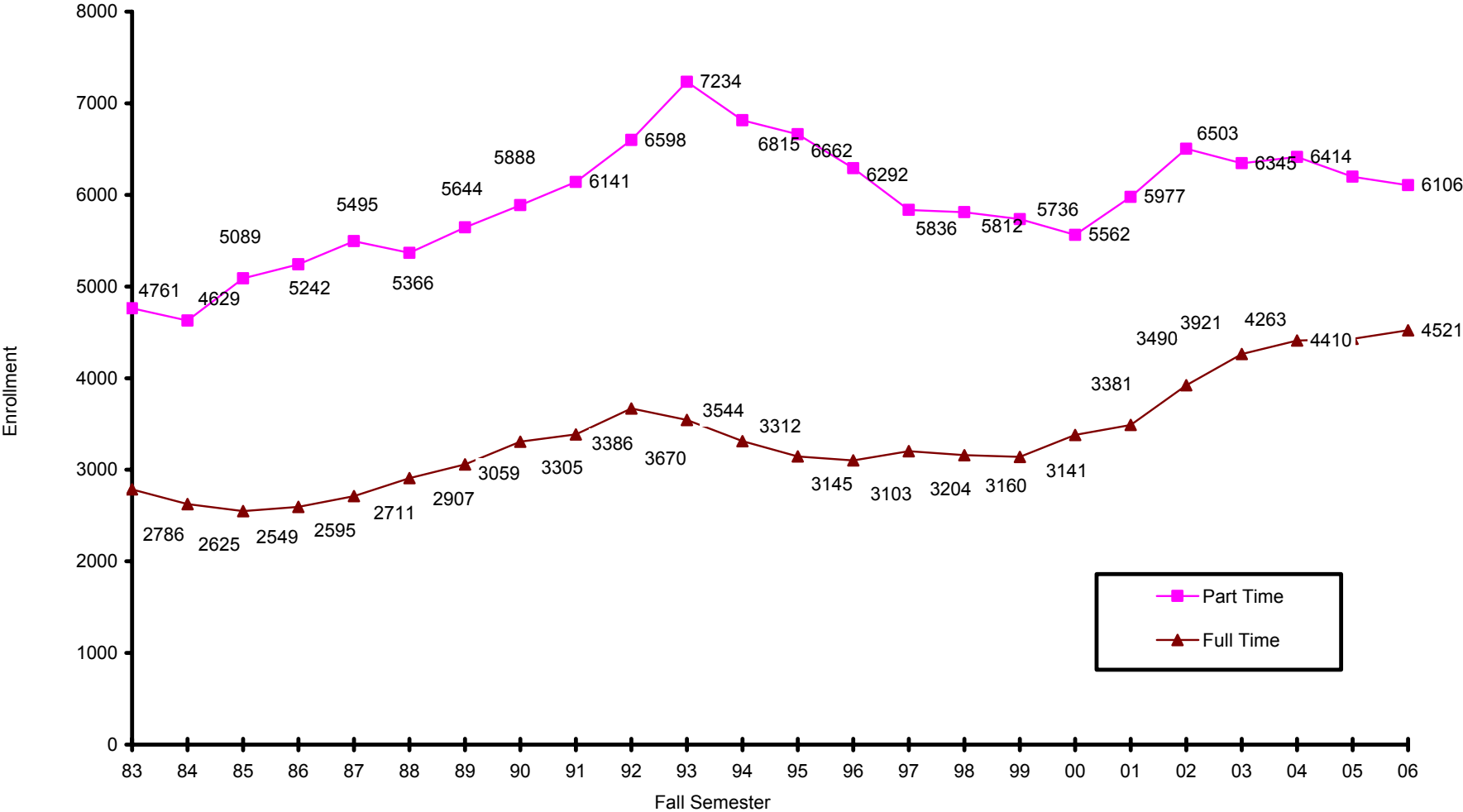
CHESTER COUNTY

Chester County Hospital	561	528	829	57.0%	301
Downingtown	7,035	6,434	6,505	1.1%	71
Exton	4,229	5,475	6,529	19.3%	1054
Oxford			36		36
Other Chester County	0	159	138	-13.2%	-21

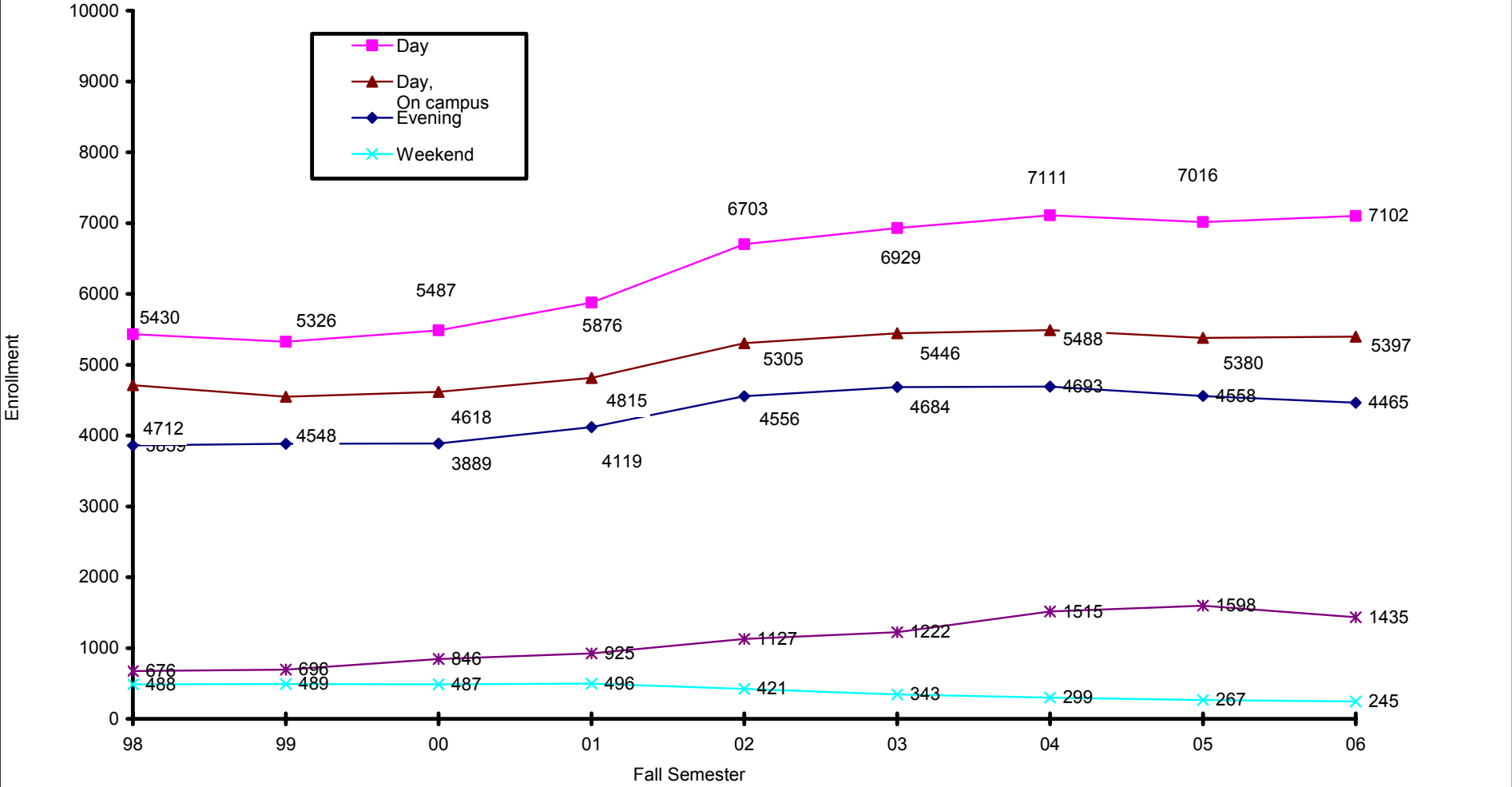
Credit Enrollment



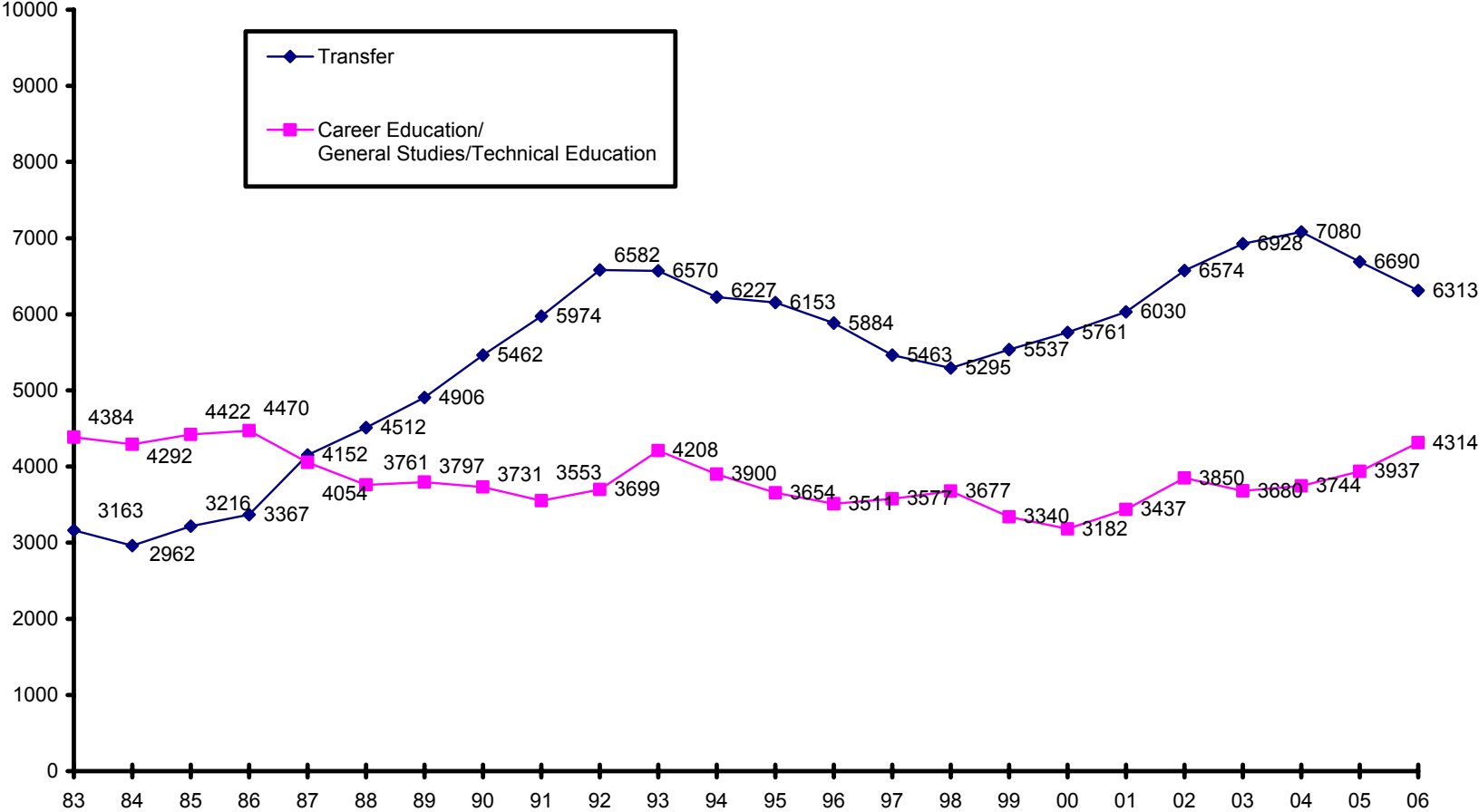
Credit Enrollment



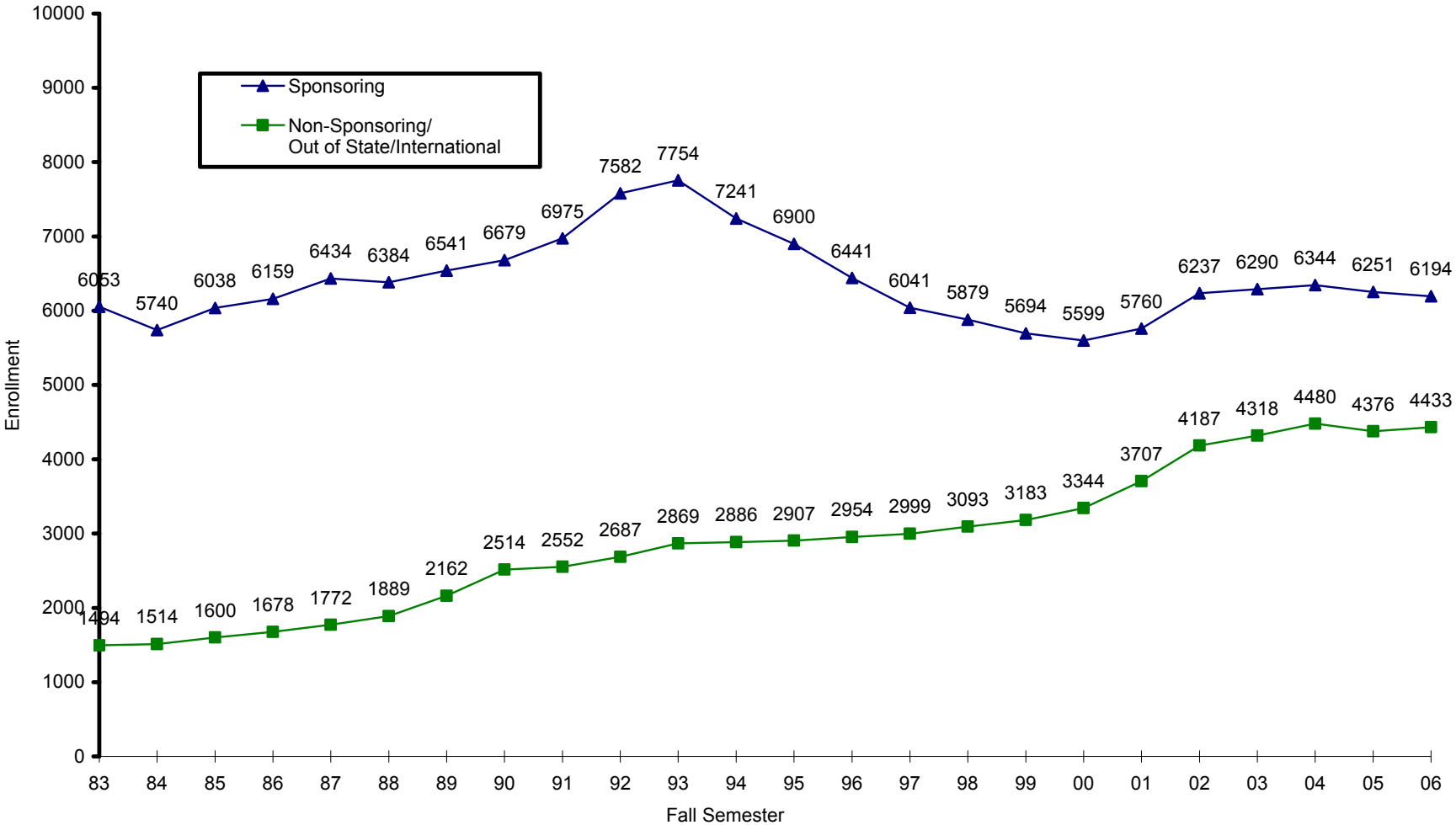
Credit Enrollment



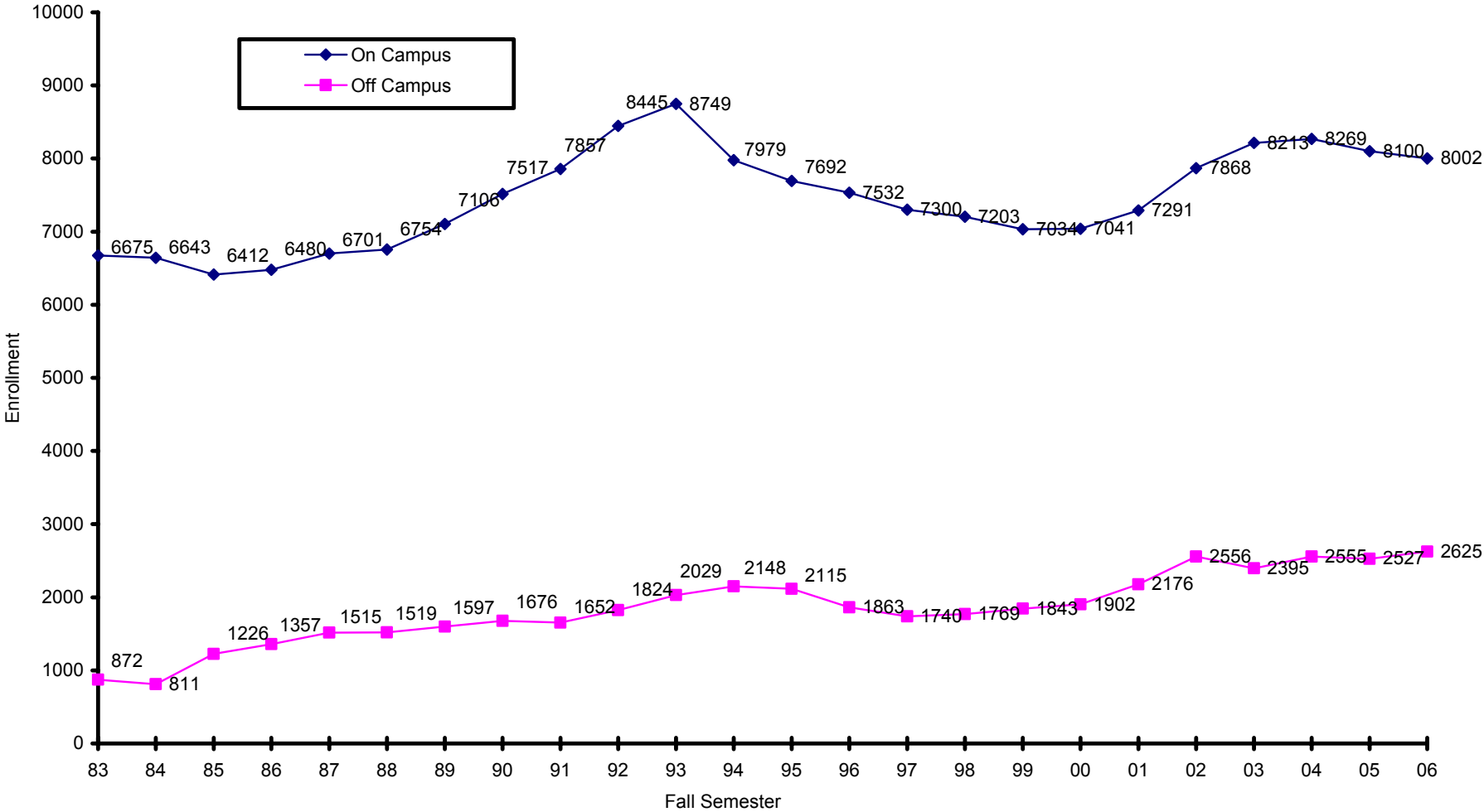
Credit Enrollment



Credit Enrollment



Credit Enrollment



Credit Enrollment

